

# Getac

Rugged Mobile Computing Solutions

# RX10

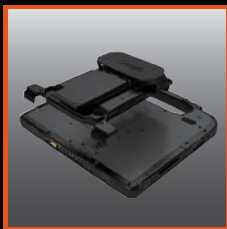
## Fully Rugged Tablet



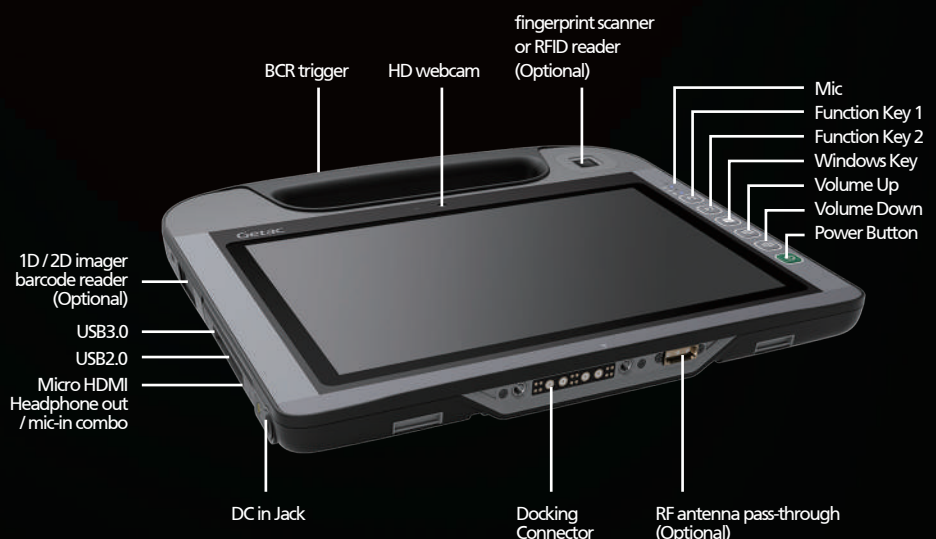
- Intel® Core™ M vPro™ Processor
- Premium Thin and Light design weighs 1.2kg and 18.8mm thin
- 10.1" Full HD LumiBond®2.0 display with Getac sunlight readable technology and capacitive touchscreen
- 2-in-1 design for mobility as a tablet or productivity with the optional attached keyboard
- Getac's proprietary optional SnapBack add-on featuring kickstand and hand strap, Smart Card reader or detachable keyboard



Office Dock



Snapback Add-on





## Spezifikationen

<b>Model Name</b>	RX10	<b>Software</b>	Getac Utility Getac Camera Adobe® Reader® Getac Barcode Manager Optional CompuTrace® Persistence Technology
<b>Operating System</b>	Windows 10 Professional Windows 7 Professional	<b>Security Feature</b>	TPM 2.0 Optional Intel® vPro™ Technology Optional fingerprint scanner or RFID reader <sup>iii</sup> Optional SnapBack add-on : Hand Strap & Kick Stand & Smart Card Reader Optional SnapBack add-on : Hand Strap & Kick Stand & Smart Card Reader & Detachable Keyboard
<b>Mobile Computing Platform</b>	Intel® Core™ M-5Y10c Processor 0.8 GHz Max. 2.0GHz with Intel® Turbo Boost Technology - 4MB Intel® Smart Cache  Intel® Core™ M-5Y71 vPro™ Processor 1.2 GHz Max. 2.9GHz with Intel® Turbo Boost Technology - 4MB Intel® Smart Cache	<b>Power</b>	AC adapter (65W, 100-240VAC, 50 / 60Hz) Li-Ion battery (15.2V, 2160mAh) <sup>iv</sup> LifeSupport™ battery swappable technology Optional high capacity battery with Smart Card reader Expansion
<b>VGA Controller</b>	Intel® HD Graphics 5300	<b>Dimension (W x D x H) &amp; Weight</b>	280 x 245 x 18.8 mm (11" x 9.65" x 0.74") 1.2kg (2.65 lbs) <sup>v</sup>
<b>Display</b>	10.1" TFT LCD FHD (1920 x 1200) 800 nits LumiBond® display with Getac sunlight readable technology Capacitive multi-touch screen	<b>Rugged Feature</b>	MIL-STD-810G certified and IP65 certified MIL-STD-461F certified <sup>vi</sup> 4 feet drop resistant Vibration & drop resistant e-Mark certified for vehicle usage Optional ANSI/ISA 12.12.01
<b>Storage &amp; Memory</b>	4GB LPDDR3 expandable to 8GB SSD 128GB / 256GB	<b>Environmental Specification</b>	Temperature <sup>vii</sup> : - Operating: -21°C to 55°C / -5.8F to 131°F - Storage: -51°C to 71°C / -60°F to 160°F Humidity: - 95% RH , non-condensing
<b>Keyboard</b>	6 tablet buttons (Windows, Power, Function Key 1, Function Key 2, Barcode Reader Trigger, Volume Up, Volume Down)	<b>Optional Accessories</b>	Carry bag Main battery (15.2V, 2160mAh) Multi-Bay Charger (Dual Bay) Multi-Bay Charger (Eight Bay) AC adapter (65W, 100-240VAC) Vehicle adapter (90W, 11-16V DC and 22-32V DC) Capacitive stylus Digitizer pen Protection Film Shoulder strap (2-point) Hand-strap & Kick Stand Hand-Strap & Kick Stand & Smart Card Reader Hand-Strap & Kick Stand & Smart Card Reader & Detachable Keyboard Vehicle dock Office dock
<b>Pointing Device</b>	Touchscreen - Capacitive multi-touch screen - Optional dual mode touchscreen (multi-touch and digitizer)		
<b>Expansion Slot</b>	Optional 1D/2D imager barcode reader		
<b>I/O Interface</b>	HD webcam x 1 8M pixels auto focus rear camera x 1 Headphone out / mic-in combo x 1 DC in Jack x 1 USB 3.0 (9-pin) x 1 USB 2.0 (4-pin) x 1 Docking connector (16-pin) x 1 Micro HDMI x 1 Optional RF antenna pass-through for GPS, WLAN and WWAN		
<b>Communication Interface</b>	Intel® Dual Band Wireless-AC 7265, 802.11ac Bluetooth (v4.0) <sup>i</sup> Optional dedicated GPS Optional Gobi™ mobile broadband		

### Docking Solutions

	Serial Port	External VGA	DC in Jack	USB	LAN	HDMI	RF antenna connector
<b>Vehicle Dock</b>	1	--	1	2	1	--	3 (optional)
<b>Office Dock</b>	--	1	1	4	1	1	--

<sup>i</sup> Bluetooth performance and connectable distance may be subject to interference with the environments and performance on client devices, users may be able to reduce effects of interference by minimizing the number of active Bluetooth wireless devices that is operating in the area.  
<sup>ii</sup> RFID and Fingerprint scanner are mutually exclusive options.  
<sup>iii</sup> 13.56MHz Contactless RFID / NFC reader (ISO 15693, 14443 A/B, Mifare and FeliCa™ compliant).  
<sup>iv</sup> Battery life testing conducted under MobileMark 2007. Battery performance will vary upon software applications, wireless settings, power management settings, LCD brightness, customized modules and environmental conditions.  
 The battery has a limited number of charge cycles and may eventually need to be replaced by a Getac service provider. Battery life and charge cycles vary by use and settings.  
<sup>v</sup> Weight varies from configurations and optional accessories.  
<sup>vi</sup> MIL-STD-461F 90W AC adapter sold separately.  
<sup>vii</sup> Tested by a national independent third party test lab following MIL-STD-810G.



## Getac Technology Corporation

5F, Building A, No. 209, Section 1, Nangang Rd., Nangang Dist.,  
 Taipei City, 11568, Taiwan, R.O.C.  
 Tel: +886 2 2785 7888  
 globalmarketing@getac.com  
 www.getac.com

