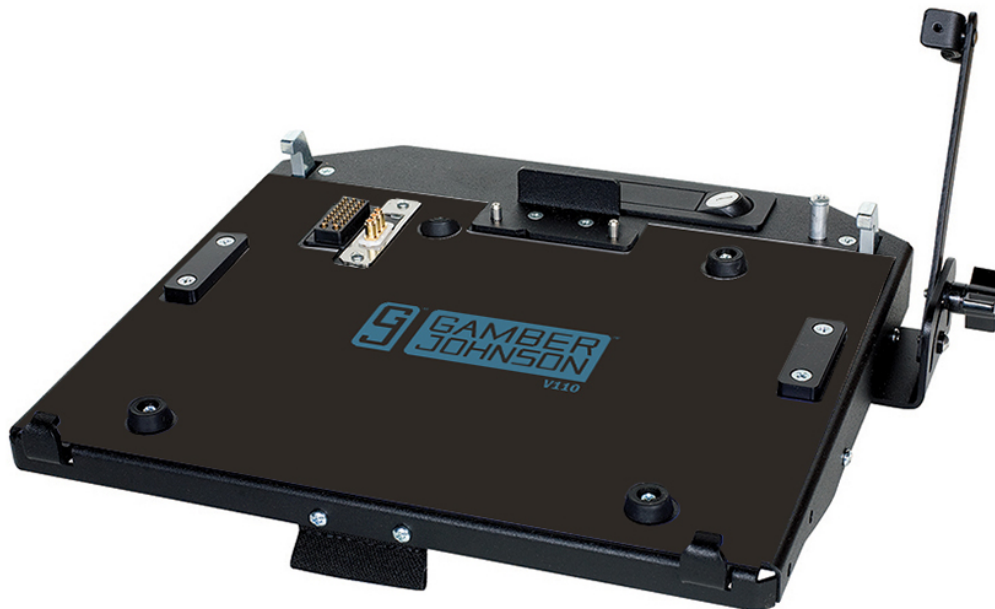


Getac V110 Docking Station (Triple RF - SMA)

Item #7160-0515-03



Getac V110 Docking Stations comes with a Screen Support

Gamber-Johnson's Getac V110 vehicle docking station is the perfect match for the Getac V110 fully-rugged notebook. It is designed for the demanding work environments in utility, public safety, and other field service applications. The V110 docking station has port replication with triple RF Antenna Pass-through and it is tested to MIL-STD 810G shock and vibration specifications.

Antenna pass-through

Triple RF (SMA)

Port Replication

- Ethernet
- Serial (2)
- Power In
- USB 2.0 (3) - 4 pin
- USB 3.0 (1) - 9 pin
- VGA
- HDMI

- Headphones/speakers
- Microphone
- Triple RF Pass-through (SMA)

Weight

3.80 lbs. / 1.7 kg

Dimensions

Height: 1.38" / 3.5 cm

Width: 11.60" / 29.5cm

Depth: 10.75" / 27.3 cm

Features

- Compatible with Getac V110 convertible computer
- Getac electronics
- Docking station can be used in tablet or laptop position
- Rugged aluminum construction with black powder coat finish for long-term durability
- Front-facing I/O ports, integrated cable strain relief system
- POGO pin style docking connector for easy docking activation
- Front safety bracket helps align computer for proper docking connectivity
- Built-in stylus holder
- Push button latch with keyed lock for theft deterrence:
 - Push the latch to release the docking connector
 - Insert computer and push latch closed to dock computer
- VESA 75 mounting pattern
- Use External power supply: Lind Auto Adapter (Item No. 15110)
- **Screen support is included with the dock**
- 3 year limited warranty

Certificates & Testing

- RoHS, FCC
- Vibration/Shock Testing: MIL-STD 810G
- Environmental: High/Low temperature - Storage/Operational and Humidity
- Docking Mechanisms Tested: 30,000 cycles
- SAE Standard J1455 Crash Test
- EMI - Electromagnetic Interference

Power supply

Not included - must use one of the following external power supplies:

- Lind 90W auto power adapter (item no. [15110](#))
- Lind 12-32V material handling isolated power adapter (item no. [16079](#))
- Lind 20-60V material handling isolated power adapter (item no. [16078](#))
- Lind 80V material handling isolated power adapter (item no. [16513](#))