

V120 ACCESSORY SPEC BROCHURE



GETAC TECHNOLOGY CORPORATION

5F, Building A, No. 209, Section 1, Nangang Rd., Nangang Dist., Taipei City,
115018, Taiwan, R.O.C. Tel : +886 2 2785 7888 globalmarketing@getac.com |
www.getac.com

CARRY BAG

Features & Benefits

Constructed of durable Nylon / air mesh fabric, and featuring an adjustable padded shoulder strap, this compact carry bag provides sturdy protection for your tablet while giving maximum comfort. The functional pockets inside offer the optimal solution to transport the tablet and needed accessories together in one case, delivering extra convenience and go-anywhere productivity to mobile professionals.

Product Information

Dimensions : L 340 x W 260 x D 65 mm
Weight : 760g
Main Material : Nylon, air mesh fabric

SKU ID

GMBCX2



100W TYPE-C AC ADAPTER

Features & Benefits

The 100W Type-C AC adapter as an additional charging solution to charge Getac rugged tablets and laptops with inherent USB type-C ports as well as the power delivery functionality. The Type-C adapter features a reversible connector type that reduces connector damages due to misuse.

Product Information

Input : 100V-240V
Output : 20V, 5A, 100W
Dimensions : L 140 x W 65 x H 25mm
Weight : 326g
Input cable length : 1830mm
Output cable length : 1500mm

SKU ID

GAT1E1 (EU Power Cord)
GAT1U1 (US Power Cord)
GAT1K1 (UK Power Cord)
GAT1A1 (AU Power Cord)
GAT1C1 (CHN Power Cord)
GAT1T1 (TW Power Cord)
GAT1I1 (IN Power Cord)



120W DC-DC VEHICLE ADAPTER

Features & Benefits

The 120W vehicle adapter comes with a choice of two types of connections: a bare wire with individual wire ends already stripped, and a cigarette lighter plug for easy connection to the cigarette lighter socket in the vehicle interior, providing a convenient way to charge and power your tablet while you are on the road.

Product Information

Input Voltage : 11VDC~ 32VDC
Output Voltage : 19VDC
Output current : 6.32A Max.
Case Dimensions : L 131.5 x W 65.6 x H 30mm
Weight : 362g
Input cable length : 1900mm
Output cable length : 1000mm

SKU ID

GAD2X4 (Cigarette Lighter Plug Version)
GAD2X8 (Bare Wire Version)



65W AC ADAPTER WITH POWER CORD

Features & Benefits

This adapter is designed to power the device and charge its internal battery from an AC power source. A country-specific power cord is included with the adapter to fit the local power outlet in your designated country.

Product Information

Input : 100V-240V, 50~60Hz, 1.5A
Output : 19V, 3.42A, 65W
Dimensions : L 108.3 x W 46.3 x H 30mm
Weight : 250g
Input cable length : 1830mm
Output cable length. : 1500mm

SKU ID

GAA6E5 (EU Power Cord)
GAA6U5 (US Power Cord)
GAA6K5 (UK Power Cord)
GAA6A5 (AU Power Cord)
GAA6C5 (CHN Power Cord)
GAA6T5 (TW Power Cord)
GAA6G5 (ARG Power Cord)
GAA6I5 (IN Power Cord)
GAA6J5 (JP Power Cord)
GAA6R5 (KR Power Cord)



90W MIL-STD-461 AC ADAPTER

Features & Benefits

This MIL-STD-461G AC adapter has passed the military standard and testing specification to ensure the conducted emissions (CE), conducted susceptibility (CS), radiated emissions (RE), and radiated susceptibility (RS) of the adapter can meet the requirements for the control of electromagnetic interference.

Product Information

Input : 100V-240V, 1.5A 50~60Hz
Output : 19V, 4.74A, 90W
Dimensions : L 147 x W 73mm x H 45.5mm
Weight : 750g (without power cord)
Input cable length : 1830mm
Output cable length : 1200mm

SKU ID

GAAGE5 (EU Power Cord)
GAAGU5 (US Power Cord)
GAAGK5 (UK Power Cord)
GAAGC5 (CHN Power Cord)
GAAGT5 (TW Power Cord)



DIGITIZER PEN WITH TETHER

Features & Benefits

The digitizer pen provides a more accurate and easy way for data entry and handwritten signature. A shortcut button allows the right mouse button functionality when using the pen.

Product Information

Stylus Dimensions : 109mm ; Ø9mm

Tip size : 2.0mm ; Ø1.65mm

Tether Length : 292mm

SKU ID

GMPDX6



GETAC DS100 USB-C DOCKING STATION WITH AC ADAPTER

Features & Benefits

The Getac DS100 USB-C Docking Station, featuring a slim and compact design, seamlessly consolidates cables on the workstation. This allows users to swiftly create a personalized workspace and organize their daily office environment. Compatible with various Getac laptop and tablet models, it provides extra connectivity and multiple I/O ports for additional peripherals and data sources. With support for MAC Address Pass-Through, Wake-on-LAN (WoL), and PXE Boot, the DS100 aids IT administrators in maintaining a secure, efficient, and well-managed network infrastructure.

Product Information

Dimensions: L 207 x W 90 x H 34.1mm

Weight (without 135W AC Adapter): 372.4g (0.82lbs)

Power Cable Length: 1.8m

USB-C Upstream Cable Length: 1m

I/O Ports: DC in Jack x 1, USB 3.2 Gen 1 Type-A x 3,

USB 3.2 Gen 2 Type-C x 2, LAN x 1, HDMI 2.0 x 1, DisplayPort 1.4 x 2

(For use in non-hazardous areas only)

SKU ID

GDDSE2 (EU Power Cord)

GDDSU2 (US Power Cord)

GDDSK2 (UK Power Cord)

GDDSA2 (AU Power Cord)

GDDSC2 (CHN Power Cord)

GDDST2 (TW Power Cord)

GDDSI2 (IN Power Cord)



SHOULDER STRAP 2-POINT

Features & Benefits

This shoulder strap attaches via two holders at the back of the tablet and is adjustable to fit most body sizes for both cross-body and shoulder carry. With its durable, sturdy design, the strap not only provides a comfortable, grip-free carrying option of the tablet but also helps in avoiding accidental drops while on the move. The shoulder strap can also attach to the detachable keyboard (sold separately) via two D-rings on the built-in handle.

Product Information

Dimensions : 38 x 1530mm
Main Material : Polyester

SKU ID

GMS2X8



65W USB-C AC ADAPTER

Features & Benefits

This adapter is designed to power the device and charge its internal battery from an AC power source.

Product Information

Input : 100V-240V, 50~60Hz, 1.6A
Output : 5V/3A, 9V/3A, 12V/3A, 15V/3A, 20V/3.25A
Dimensions : L 90 x W 51 x H 28.5mm
Weight : 220g ±15g
Input cable length : 1830mm
Output cable length. : 1500mm

SKU ID

GAT6U1 (US Power Cord)
GAT6E1 (EU Power Cord)
GAT6K1 (UK Power Cord)
GAT6A1 (AU Power Cord)
GAT6C1 (CHN Power Cord)
GAT6T1 (TW Power Cord)
GAT6G1 (AG Power Cord)



CAPACITIVE STYLUS & TETHER

Features & Benefits

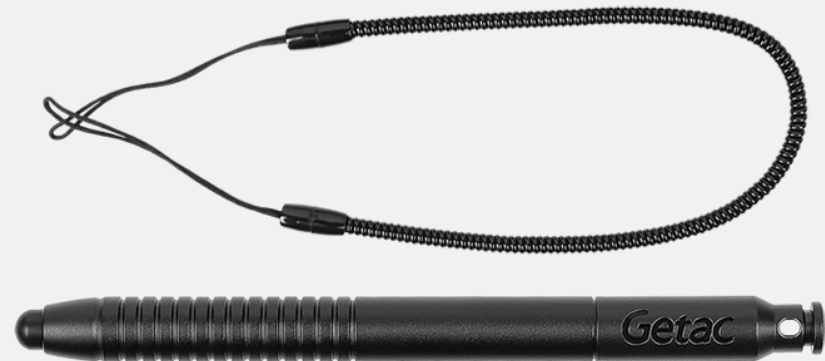
This capacitive hard tip stylus is lightweight and easy to control, allowing smooth and comfortable interaction with the touch screen without worrying about scratching the screen or leaving fingerprints on it. The stylus comes with a detachable tether to keep the stylus attached to the device, so it doesn't get lost or misplaced.

Product Information

Stylus Dimensions : 110mm ; Ø9mm
Tip size : 4mm ; Ø5.5mm
Tether Length : 304mm

SKU ID

GMPSXW
* MOQ : 10pcs



HAND STRAP

Features & Benefits

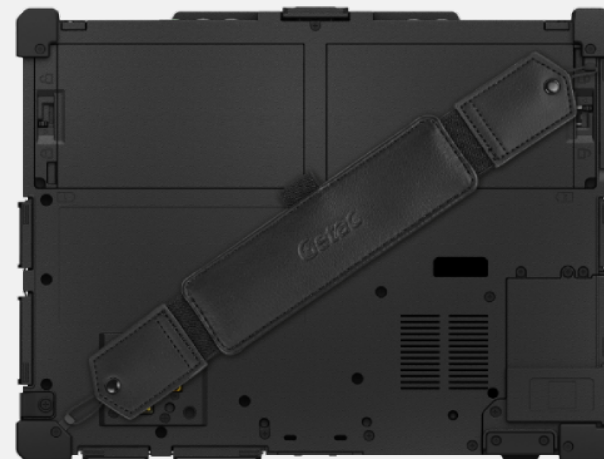
This hand strap is easy to attach and detach from the device, providing you with a comfortable, stable grip with just one hand. A stylus holder is also integrated into the hand strap for added convenience.

Product Information

Dimensions : 311 x 54mm
Material : Leather

SKU ID

GMHSX4



HANDLE

Features & Benefits

The handle is giving extra mobility to field workers to grab-and-go when the situation occurs. Users could easily install or remove it from the strap holder attached to the corner bumpers. The handle also provides a pen holder for placing a stylus or digitizer pen.

Product Information

Dimensions : 163 x 20mm
Weight : 50g
Main Material : PC+ABS, TPU

SKU ID

GMHDX7



STANDARD BATTERY 4070MAH (1-PACK)

Features & Benefits

The hot-swappable battery can support full-shift computing with no downtime. It is a great solution for mobile professionals who require long battery life for all-day operation.

Product Information

Battery Type : Lithium-ion Polymer
Voltage : 7.74V
Capacity : Typical 4070mAh ; Min. 3800mAh
Dimensions : L 133 x W 74 x H 10mm
Weight : 146g

SKU ID

GBM2X4



HIGH-CAPACITY BATTERY 4070MAH (1-PACK)

Features & Benefits

The high-capacity battery pack extends the system run time up to two times compared to the standard battery pack, providing a great solution for mobile professionals who require extra battery life for operation longer than one day.

Product Information

Battery Type : Lithium-ion Polymer
Voltage : 11.61V
Capacity : Typical 4070mAh ; Min. 3800mAh
Dimensions : L 133 x W 74 x H 16.8mm
Weight : 205g

SKU ID

GBM3X8



MAIN STORAGE WITH CANISTER

Features & Benefits

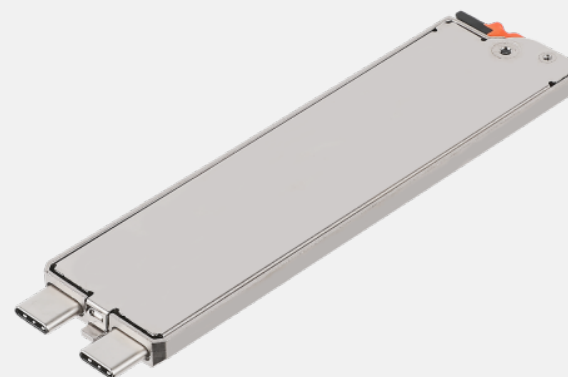
Getac V120 Main Storage with canister is designed to provide you with the ease of installation and allow you to remove your confidential data when your device is sent for service.

Product Information

PCIe SSD option : 256GB, 512GB, 1TB, 2TB
PCIe NON-SED SSD option : 256GB, 512GB
Dimensions : L 110.8 x W 28.2 x H 5.7mm

SKU ID

GSSEXD (256GB PCIe SSD)
GSSFxE (512GB PCIe SSD)
GSSGXF (1TB PCIe SSD)
GSSHxD (2TB PCIe SSD)
GSSJX6 (256GB PCIe NON-SED SSD)
GSSKX7 (512GB PCIe NON-SED SSD)



EXTERNAL DUAL-BAY BATTERY CHARGER

Features & Benefits

This external dual-bay battery charger is designed to charge up to two batteries at the same time. It provides the benefit of charging and storing the 2 batteries together when there is limited space and power socket.

Product Information

AC Input : 100V~240V
DC Output : 13.05V, 2.4A Max.
Number of charge bay : 2 Bay
Dimensions : L 160 x W 180 x H 72.5mm
Weight : 1.2kg ,not including battery packs
Support main batteries and high-capacity batteries.

SKU ID

GCMCET (EU Power Cord)
GCMCUT (US Power Cord)
GCMCKT (UK Power Cord)
GCMCAT (AU Power Cord)
GCMCCT (CHN Power Cord)
GCMCTT (TW Power Cord)
GCMCGT (ARG Power Cord)
GCMCIT (IN Power Cord)



PROTECTION FILM (AG)

Features & Benefits

This screen protection film is cut precisely to fit the tablet and is easy to install and remove without leaving a sticky residue. With anti-glare coating, it not only protects the screen from the rigors of daily use but also helps to diffuse light on the screen and reduces glare, providing effortless readability for displayed information under common ambient lighting conditions.

Product Information

Dimensions : 264 x 165.4mm
Main Material : PET

SKU ID

GMPFXY (MOQ : 10pcs)



MULTI-BAY BATTERY CHARGER EIGHT BAY

Features & Benefits

The 8-bay multi-battery charger is designed to charge multiple battery packs simultaneously and provide users an efficient charging solution.

Product Information

AC Input : 100V~240V AC, 4.2A 50~60Hz

DC Output : 19.5V, 16.9A

* w / 330W AC Adapter

Number of charge bays : 8 bays

Dimensions : L 465 x W 245 x H 95.3~111.3mm

Weight : 4.7 kg ,not including battery packs

Support main batteries and high-capacity batteries.

SKU ID

GCECET (EU Power Cord)

GCECUT (US Power Cord)

GCECKT (UK Power Cord)

GCECAT (AU Power Cord)

GCECCT (CHN Power Cord)

GCECTT (TW Power Cord)

GCECIT (IN Power Cord)



HARD HANDLE

Features & Benefits

The hard handle offers extra mobility for field workers to grab and go when needed. This hard handle is a factory-installed option, where Getac professionals could ensure the installation meets the Getac standard.

Product Information

Dimensions : L 285.4 x W 89.5 x H 23.8 mm
Weight : 148.8g
Material : PC, TPSIV

SKU ID

GMHDXD

